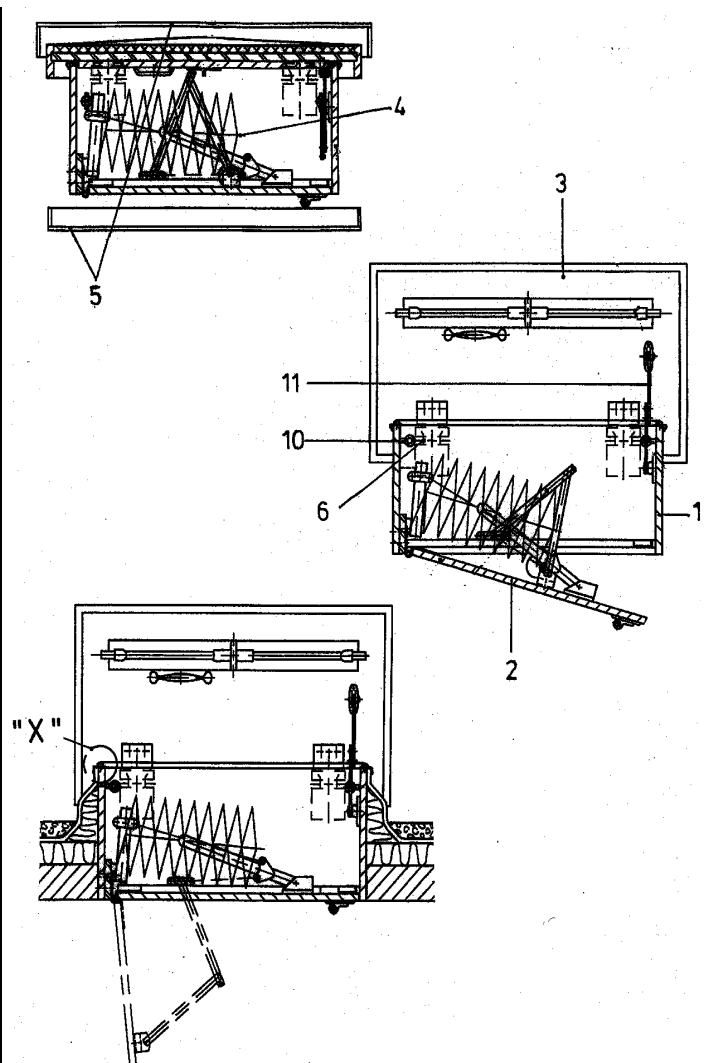


Installation instructions for flatroof access with wooden casing, operated by hand

Installation only allowed by authorized persons

Wooden casings can be fitted completely from above. Please control measures of the flatroof access and the opening size before you start with fixing (fixing space 1 cm all round). Please remove upper cover before you push the flatroof access trough the structural opening. Please use the four pieces of hanging up eyes inside the wooden hatchbox as help for fixing. The angle of inclination is max. 45 degrees against the vertical line. Please make sure that the load of all four hanging up eyes is max. 5 KN.

1. Please remove packing material
2. Please open upper cover. If fixed please remove linkage, gas springs and hinge bolts. Remove the upper cover (Attention ! gas springs are under pressure, hold the upper cover and remove linkage). Push the flatroof access trough the structural opening.
3. On the outside of the hatchbox in dependent of ceiling height (thickness of ceiling + 2cm for adjustment) please fix leashes (min. 30 x 30 x 1000 mm) with screws for wood (min. 4,5 x 50 mm) five times on each side. Please put the hatchbox into the structural opening (the lower trapdoor can be opened now). Please adjust the hatchbox with wooden wedges, until the hatchbox is in the correct position (please use spirit level). Prove the distance between frame and trapdoor and adjust the distance (must be all around the same). Underlay the fixing points and fix the hatchbox in the correct position. Our suggestion for casings up to 150 x 100cm: please fix on the long sides of the hatchbox 3 screws (left and right side) and 2 screws on the short sides (left and right side, minimum diameter of the screws = 6 x 70mm). Fixing space all around 1 cm.
4. Please fix the removed parts and the upper cover. (Attention ! please fix the gas springs first, close the upper cover (not completely) and fix linkage).
5. The upstand between the ready flatroof and the upper cover of the flatroof access **must be** protected with insulation, roofing felt and vapour barrier against influences of the weather (please see detail „X“ and sheet: **cross section flatroof access F885-91477**). Upper hinges must be insulated completely with foam. All parts made of wood in unfinished state must be painted with colourless varnish against fungus. The conection between the hatchbox and the building (fixing space) must be filled with insulation material.



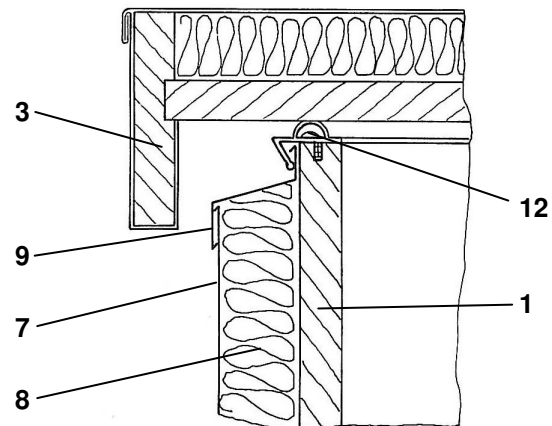
**Legend and Detail
„X“
See rear side**

Detail „X“

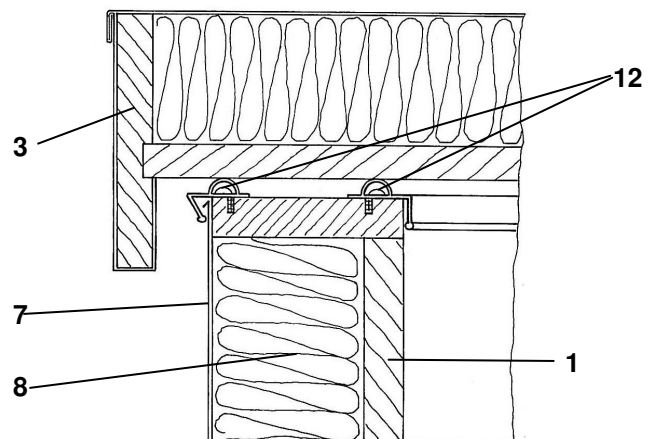
Single-Insulation

low heat protection

- 1) Hatchbox
- 2) Lower trapdoor
- 3) Upper cover
- 4) Stairs
- 5) Packaging
- 6) Hinge bolt
- 7) Membrane (provided by customer)
- 8) Insulation (provided by customer)
- 9) Rabbet (provided by customer)
- 10) Hanging up eyes
- 11) Arrester leverage
- 12) Rubber seal



Insulation according to EnEV



Attention:

If the flatroof exit is installed before plasterwork and cement flooring have been finished, make sure that both covers remain closed and that the underside of the flatroof exit is protected against vapour until humidity rate of the building has gone back to normal value.